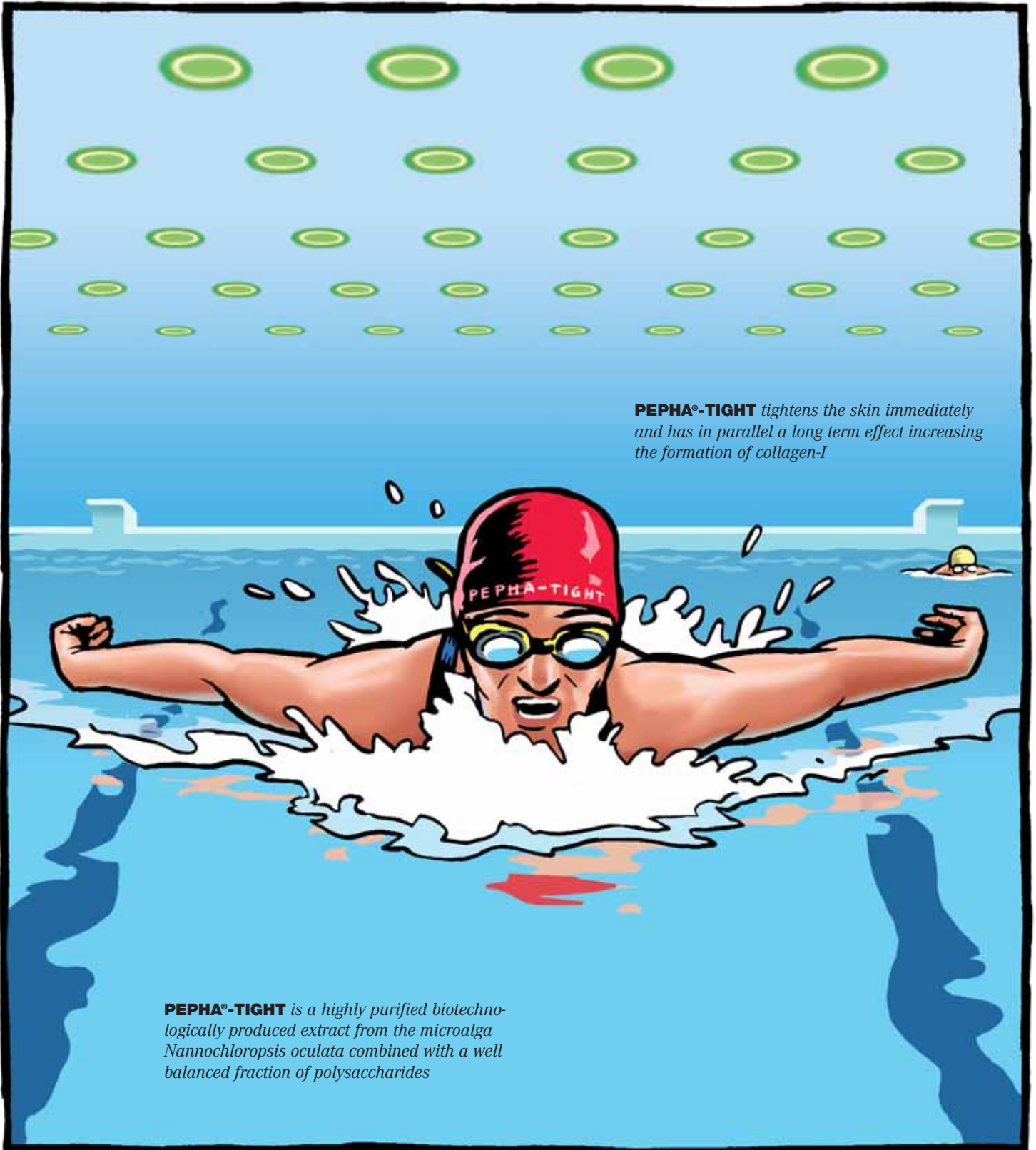


**PEPHA®-TIGHT** - *to choose the fast lane  
to superior skin tightening.*

Gruner & Bremelstein AG Basel



**PEPHA®-TIGHT** *tightens the skin immediately and has in parallel a long term effect increasing the formation of collagen-I*

**PEPHA®-TIGHT** *is a highly purified biotechnologically produced extract from the microalga Nannochloropsis oculata combined with a well balanced fraction of polysaccharides*

Exclusive North American Distributor

 **CENTERCHEM, INC.**

20 Glover Ave., Norwalk, CT 06850

Tel: (203) 822-9800

Fax: (203) 822-9820

e-mail: [cosmetics@centerchem.com](mailto:cosmetics@centerchem.com)

[www.centerchem.com](http://www.centerchem.com)

**pentapharm**

*benefiting society through science*



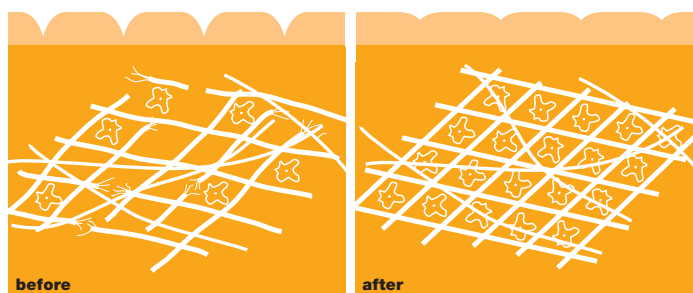
# PEPHA<sup>®</sup>-TIGHT

**PEPHA<sup>®</sup>-TIGHT** is a highly purified biotechnologically produced extract from the microalga *Nannochloropsis oculata* combined with a well balanced fraction of polysaccharides. A special fermentation technology and optimal growth conditions ensure the high quality and pureness of the algae extract.

## Properties:

**PEPHA<sup>®</sup>-TIGHT** tightens the skin immediately and has in parallel a long term effect strengthening the skin's connective tissue.

Loose skin often is a result of oxidative stress and damaged collagen fibres. As shown in *in vitro* assays **PEPHA<sup>®</sup>-TIGHT** protects skin cells from oxidative stress and increases simultaneously the formation of collagen-I.



## Function:

- **PEPHA<sup>®</sup>-TIGHT** has a noticeable instant tightening effect and smoothes fine wrinkles
- **PEPHA<sup>®</sup>-TIGHT** acts preventively as a protection shield against oxidative stress
- **PEPHA<sup>®</sup>-TIGHT** strengthens the connective tissue by increasing the formation of collagen-I

## Cosmetic application:

- all kinds of tightening gels, lotions, serums
- masks
- lifting products
- décolleté treatments

## Formulation:

**PEPHA<sup>®</sup>-TIGHT** is a yellowish to amber, viscous liquid. It should be incorporated at the end of the formulation process (<50°C).

## Suggested concentration:

1–5% **PEPHA<sup>®</sup>-TIGHT**

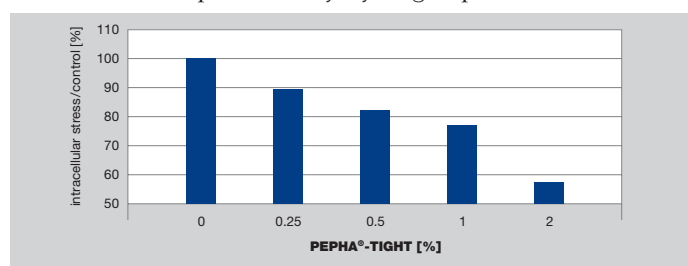
## INCI name:

Algae Extract, Pullulan

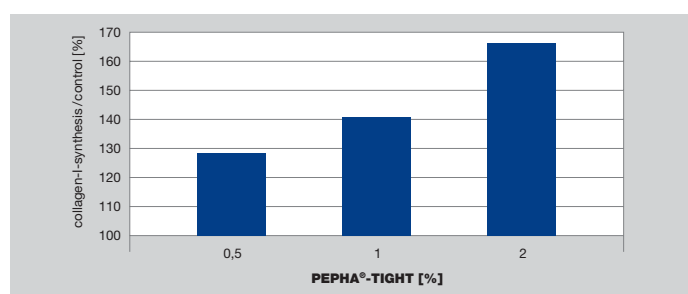
## Efficacy tests:

### *In vitro* tests:

1. **PEPHA<sup>®</sup>-TIGHT** protects human fibroblasts from oxidative stress provoked by hydrogen peroxide.

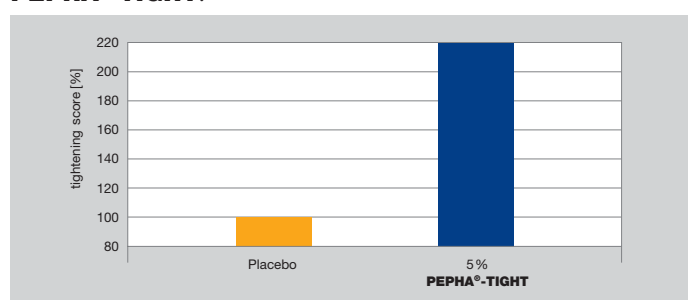


2. **PEPHA<sup>®</sup>-TIGHT** stimulates the formation of collagen-I in human fibroblasts.



### *In vivo* tests:

1. The immediate efficacy of **PEPHA<sup>®</sup>-TIGHT** was evaluated *in vivo* with 20 volunteers applying a test gel containing 5% **PEPHA<sup>®</sup>-TIGHT**.



2. The efficacy of **PEPHA<sup>®</sup>-TIGHT** was performed in an *in vivo* study with 30 volunteers applying a test gel containing 3% **PEPHA<sup>®</sup>-TIGHT** during 2 weeks. The figure shows the statements of the panellists reporting a very good/good tightening effect:

